

MPB

WARM UP

Steve Sanchez

SPIDER EXERCISE

1 ♩ = 84

Musical notation for the Spider Exercise, measures 1-8 and 9-16. The piece is in 4/4 time with a tempo of 84 beats per minute. It features a sequence of eighth and quarter notes with various accidentals (flats, sharps, naturals) and rests, all under a single slur.

BD LIP SLUR EXERCISES

Musical notation for BD Lip Slur Exercises, measures 17-23 and 24-31. This section consists of two lines of music, each containing four measures of eighth-note slurs with various accidentals.

BD LIP SLUR EXERCISES CONT'D

Musical notation for BD Lip Slur Exercises Cont'd, measures 32-39, 40-47, 48-55, and 56-63. This section consists of four lines of music, each containing seven measures of eighth-note slurs with various accidentals.

4

CLARKE STUDIES #1

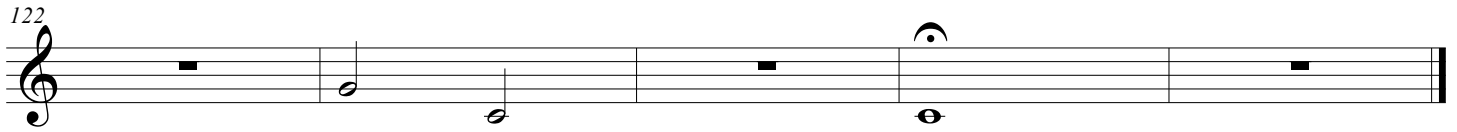
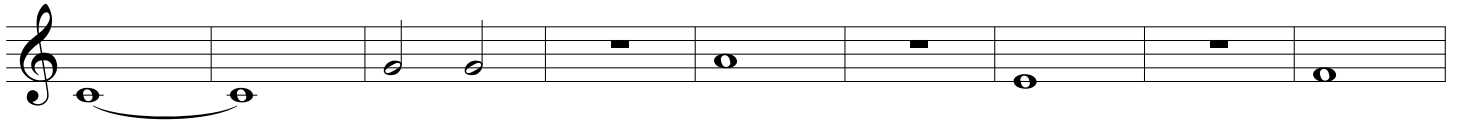
Musical notation for Clarke Studies #1, measures 45-77. The piece is in treble clef with a key signature of one sharp (F#). It consists of a single melodic line with a complex, rhythmic pattern of eighth and sixteenth notes, often beamed together in groups. The notation includes various articulations such as slurs and accents. The piece concludes with a double bar line and repeat dots at the end of the final measure.

5

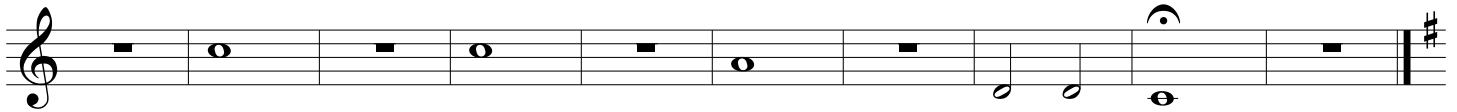
CLARKE STUDIES #2

Musical notation for Clarke Studies #2, measures 80-111. The piece is in treble clef with a key signature of one sharp (F#). It consists of a single melodic line with a complex, rhythmic pattern of eighth and sixteenth notes, often beamed together in groups. The notation includes various articulations such as slurs and accents. The piece concludes with a double bar line and repeat dots at the end of the final measure.

6 TUNING EXERCISE



7 BALANCE EXERCISE



8 CHORALE

